

# Compression Connections

**BURNDY®**

Copper Compression – Code – Long Barrel – No Inspection Window

C-36

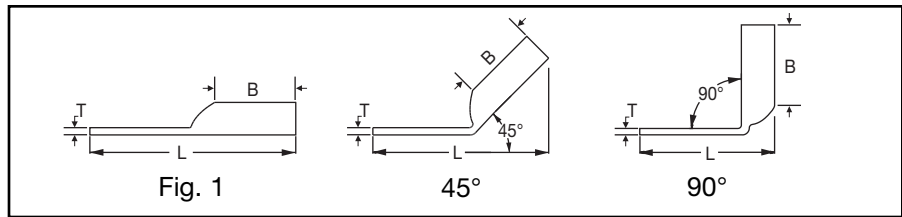
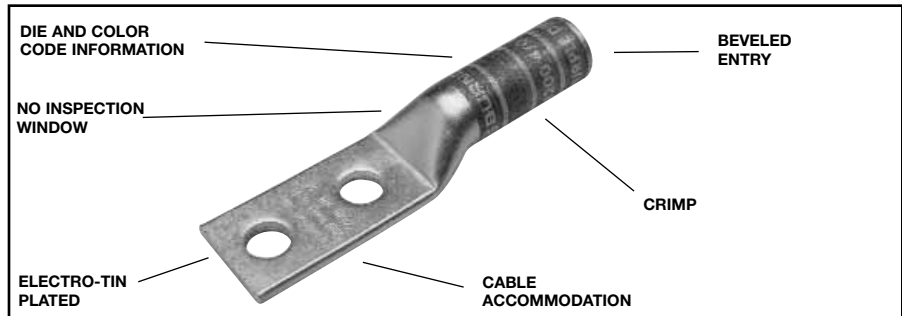
## TWO HOLE HYLUG™ CODE CONDUCTOR LONG BARREL

TYPES YA-2N, YA-2TC, YA-4N

UL Listed 90° C,  
600 Volts to 35 kV ◆

45° and 90° angles are available.

Please contact Customer Service to order:  
1-800-346-4175



Catalog Number	Fig #	Conductor			Stud Hole Size	Stud Hole Spacing	Tongue Width	Figure Dimensions			Dieless (# of crimps)	▲ Installation Tooling				Wire Strip Length					
		AWG	MM <sup>2</sup>	†				(B)	(T)	(L)		Mechanical MD6, OUR840, MD7-34R	Hydraulic		Color Code		Die Index				
													BCT500HS, Y500CTS	Y35, Y39, Y750, Y46*, PAT750							
YA8C2TC14	1	#8 Str. #6 Sol. 37/24	† 10	1/4"	5/8"	.40"	.81"	.08"	2.33"	Y8MRB-1 (2) MY29-3 (2) MY29-11 (2) MRC840 (2) Y81KFT (1) Y81KFTMBH (1) PAT81KFT-18V (1)	W8CVT (2) W8CRT (2) X8CRT (2)	W8CVT (2) W8CRT (2) X8CRT (2)	U8CRT (1)	Red	49	1"					
YA8C2TC14E2	1						1/4"	3/4"	.41"	.81"	.08"	2.45"									
YA8C2TC38	1						3/8"	1"	.73"	.81"	.06"	2.89"									
YA6C2N	1	#6 AWG	—	1/2"	1-3/4"	.81"	1.12"	.12"	4.40"	Y1MRTC (2)	W5CVT (2) W5CRT (2) X5CRT (2) X8CART (2)	W5CVT (2)	W5CVT (2)	U5CRT (2) U8CABT (2)	Blue	7	1-3/16"				
YA6C2TC14	1						1/4"	5/8"	.45"	1.12"		.08"	2.65"					MY29-3 (2)			
YA6C2TC14E1	1						1/4"	1"	.45"	1.12"		.08"	3.03"					MY29-11 (2)			
YA6C2TC14E2	1						1/4"	3/4"	.45"	1.12"		.08"	2.78"					MRC840 (2)			
YA6C2TC38	1						3/8"	1"	.63"	1.12"		.06"	3.22"					Y81KFT (1)			
YA6C2TC38E2	1						3/8"	3/4"	.63"	1.12"		.06"	2.97"					Y81KFTMBH (1)			
YA6C2TC38E6	1						3/8"	7/8"	.63"	1.12"		.06"	3.09"					PAT81KFT-18V (1)			
YA5C2N	1	#5 AWG	—	1/2"	1-3/4"	.83"	1.12"	.12"	4.43"	MY29-3 (2) MY29-1 (2) MRC840 (2) Y644HS (1) Y81KFT (1) Y81KFTMBH (1) PAT81KFT-18V (1)	W5CRT (2) W5CVT (2) X5CRT (2)	X5CRT (2) X5CVT (2) W5CRT (2)	U5CRT (2)	Blue	7	1-3/16"					
YA4C2N	1	#4 AWG	—	1/2"	1-3/4"	.81"	1.12"	.12"	4.45"	Y1MRTC (4)	W4CVT (2)	W4CVT (2)	U4CRT (2) U6CABT (2)	Gray	8	1-3/16"					
YA4C2TC14	1						1/4"	5/8"	.50"	1.12"	.09"	2.70"					MY29-3 (2)	W4CRT (2)	W4CRT (2)		
YA4C2TC14E2	1						1/4"	3/4"	.50"	1.12"	.09"	2.83"					MY29-11 (2)	X4CRT (2)	X4CRT (2)		
YA4C2TC38	1						3/8"	1"	.56"	1.12"	.08"	3.26"					MRC840 (2)				
YA3C2N	1						1/2"	1-3/4"	.81"	1.25"	.12"	4.62"					Y644HS (1)	W3CRT (2)	W3CRT (2)	U3CRT (2)	White
YA3C2TC14	1	1/4"	5/8"	.55"	1.25"	.09"	2.87"	Y81KFT (1)													
YA3C2TC14E2	1	1/4"	3/4"	.55"	1.25"	.09"	2.99"	Y81KFTMBH (1)													
YA3C2TC38	1	3/8"	1"	.58"	1.25"	.08"	3.43"	PAT81KFT-18V (1)													
YA3C2TC38E2	1	3/8"	3/4"	.58"	1.25"	.08"	3.18"														

▲ See tooling section of this catalog for complete tool and die listings.

\* Use PUADP-1 adaptor with U -dies in Y46 HYPRESS™.

\*\* P-RT die sets for use in Y46 HYPRESS™ only, PUADP-1 adaptor not required.

\*\*\* The MM<sup>2</sup> conductor sizes listed are the recommendations for Class 2 conductor.

† The MM<sup>2</sup> conductor size listed here is for Class 2 and Class 5 conductor.

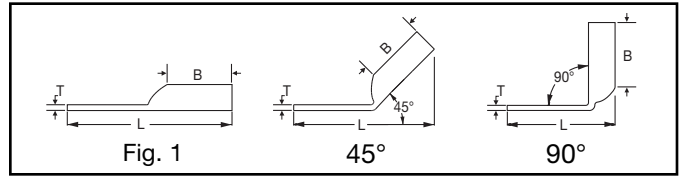
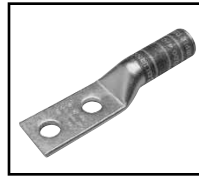
Available undrilled. Add suffix U to catalog number (example: YA25U).

◆ For applications greater than 2000 Volts consult cable manufacturer for voltage stress relief instructions.

Note: All dimensions shown are for reference only.

Blue highlighted items are industry standard and most frequently ordered.

**TWO HOLE HYLUG™  
CODE CONDUCTOR  
LONG BARREL**  
(Continued)



UL Listed 90° C,  
600 Volts to 35 kV ◆

45° and 90° angles are available.  
Please contact Customer Service to order:  
1-800-346-4175



Catalog Number	Fig #	Conductor		Stud Hole Size	Stud Hole Spacing	Tongue Width	Figure Dimensions			Dieless (# of crimps)	▲ Installation Tooling					
		AWG	MM²				(B)	(T)	(L)		Mechanical MD6, OUR840, MD7-34R	Hydraulic		Color Code	Die Index	Wire Strip Length
												BCT500HS, Y500GTHS	Y35, Y39, Y750, Y46*, PAT750			
<b>YA2C2N</b>	1	#2 AWG	35	1/2"	1-3/4"	.81"	1.25"	.12"	4.64"	Y1MRTC (4) MY29-3 (2) MY29-11 (2) MRC840 (2) Y644HS (1) Y81KFT (2) Y81KFTMBH (2) PAT81KFT-18V (2)	W2CVT (2) W2CRT (2) X2CRT (2)	W2CVT (2) W2CRT (2) X2CRT (2)	U2CRT (2)	Brown	10	1-5/16"
<b>YA2C2TC14</b>	1			1/4"	5/8"	.60"	1.25"	.11"	2.86"							
<b>YA2C2TC14E2</b>	1			1/4"	3/4"	.60"	1.25"	.11"	2.98"							
<b>YA2C2TC38E2</b>	1			3/8"	3/4"	.60"	1.25"	.11"	3.17"							
<b>YA2C2TC516E2</b>	1			5/16"	3/4"	.60"	1.25"	.11"	3.05"							
<b>YA2C2NTC38</b>	1			3/8"	1-3/4"	.60"	1.25"	.11"	4.17"							
<b>YA2C2TC38</b>	1			3/8"	1"	.60"	1.25"	.11"	3.42"							
<b>YA2C2TC38E6</b>	1			3/8"	7/8"	.60"	1.25"	.11"	3.30"							
<b>YA2C2TC516E2</b>	1			5/16"	3/4"	.60"	1.25"	.11"	3.05"							
<b>YA1C2N</b>	1	#1 AWG	50	1/2"	1-3/4"	.81"	1.38"	.12"	4.82"	Y1MRTC (4) MY29-3 (2) MY29-11 (2) MRC840 (2) Y644HS (1) Y81KFT (2) Y81KFTMBH (2) PAT81KFT-18V (2)	W1CVT (2) W1CRT-1 (2) X1CRT-1 (2)	W1CVT (2) W1CRT-1 (2) X1CRT-1 (2)	U1CRT-1 (2) U4CABT (2)	Green	11	1-1/2"
<b>YA1C2TC14</b>	1			1/4"	5/8"	.68"	1.38"	.10"	3.03"							
<b>YA1C2TC14E2</b>	1			1/4"	3/4"	.75"	1.38"	.10"	3.15"							
<b>YA1C2TC38</b>	1			3/8"	1"	.68"	1.38"	.10"	3.59"							
<b>YA252N</b>	1	1/0 AWG	—	1/2"	1-3/4"	.81"	1.38"	.11"	4.81"	MY29-3 (2) MY29-11 (2) MRC840 (4) Y644HS (1) Y81KFT (2) Y81KFTMBH (2) PAT81KFT-18V (2)	W25VT (4) W25RT (4) X25RT (4)	W25VT (4) W25RT (4) X25RT (4)	U25RT (2) U2CABT (2)	Pink	12	1-7/16"
<b>YA252TC14</b>	1			1/4"	5/8"	.75"	1.38"	.12"	3.05"							
<b>YA252TC14E2</b>	1			1/4"	3/4"	.75"	1.38"	.12"	3.18"							
<b>YA252TC38</b>	1			3/8"	1"	.75"	1.38"	.12"	3.62"							
<b>YA252TC516</b>	1			5/16"	1"	.75"	1.38"	.12"	3.49"							
<b>YA252NTC38</b>	1			3/8"	1-3/4"	.75"	1.38"	.12"	4.37"							
<b>YA262N</b>	1	2/0 AWG	70	1/2"	1-3/4"	.83"	1.50"	.12"	4.97"	Y81KFTMBH (2) PAT81KFT-18V (2)	W26VT (4) W26RT (4) X26RT (4)	W26VT (4) W26RT (4) X26RT (4)	U26RT (2)	Black	13	1-9/16"
<b>YA262TC14</b>	1			1/4"	5/8"	.83"	1.50"	.12"	3.22"							
<b>YA262TC14E2</b>	1			1/4"	3/4"	.83"	1.50"	.12"	3.34"							
<b>YA262TC38</b>	1			3/8"	1"	.83"	1.50"	.12"	3.78"							
<b>YA272N</b>	1	3/0 AWG	—	1/2"	1-3/4"	.91"	1.50"	.13"	5.01"	Y81KFTMBH (2) PAT81KFT-18V (2)	W27VT (4) W27RT (4) X27RT (6)	W27VT (4) W27RT (4) X27RT (6)	U27RT (2)	Orange	14	1-9/16"
<b>YA272TC14E2</b>	1			1/4"	3/4"	.91"	1.50"	.12"	3.38"							
<b>YA272TC38</b>	1			3/8"	1"	.90"	1.50"	.12"	3.82"							
<b>YA282N</b>	1	4/0 AWG	—	1/2"	1-3/4"	1.02"	1.62"	.14"	5.17"	MY29-3 (2) MY29-11 (2) Y644HS (1) Y81KFT (2) Y81KFTMBH (2) PAT81KFT-18V (2)	W28VT (4) W28RT (4) X28RT (6)	W28VT (4) W28RT (4) X28RT (6)	U28RT (2)	Purple	15	1-11/16"
<b>YA282TC38</b>	1			3/8"	1"	1.02"	1.62"	.14"	3.99"							
<b>YA282TC14E2</b>	1			1/4"	3/4"	1.02"	1.62"	.14"	3.55"							
<b>YA282NTC38</b>	1			3/8"	1-3/4"	1.02"	1.62"	.14"	4.74"							
<b>YA292N</b>	1	250 kcmil	—	1/2"	1-3/4"	1.11"	1.62"	.16"	5.21"	MY29-3 (2) MY29-11 (2) Y644HS (1) Y81KFT (2) Y81KFTMBH (2) PAT81KFT-18V (2)	W29VT (4) X29RT (8)	W29VT (4) W29RT (4) X29RT (8)	U29RT (2)	Yellow	16	1-11/16"
<b>YA292TC38</b>	1			3/8"	1"	1.10"	1.62"	.16"	4.02"							

▲ See tooling section of this catalog for complete tool and die listings.  
\* Use PUADP-1 adaptor with U -dies in Y46 HYPRESS™.

\*\* P-RT die sets for use in Y46 HYPRESS™ only, PUADP-1 adaptor not required.  
\*\*\* The MM² conductor sizes listed are the recommendations for Class 2 conductor.

Available undrilled. Add suffix U to catalog number (example: YA25U).  
◆ For applications greater than 2000 Volts consult cable manufacturer for voltage stress relief instructions.  
**Note:** All dimensions shown are for reference only.

**Blue highlighted items are industry standard and most frequently ordered.**

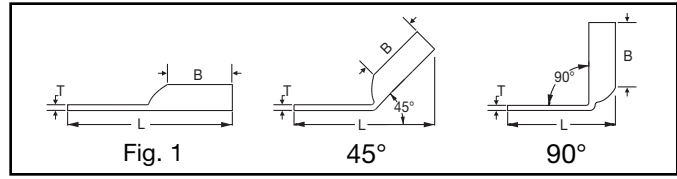
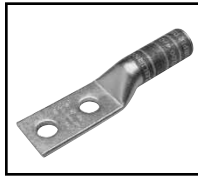
# Compression Connections

**BURNDY®**

Copper Compression – Code – Long Barrel – No Inspection Window

C-38

## TWO HOLE HYLUG™ CODE CONDUCTOR LONG BARREL (Continued)



UL Listed 90° C,  
600 Volts to 35 kV ◆

45° and 90° angles are available.  
Please contact Customer Service to order:  
1-800-346-4175



Catalog Number	Fig #	Conductor		Stud Hole Size	Stud Hole Spacing	Tongue Width	Figure Dimensions			Dieless (# of crimps)	▲ Installation Tooling					Wire Strip Length		
		AWG	MM²				(B)	(T)	(L)		Mechanical		Hydraulic		Color Code		Die Index	
											MD6, OUR840, MD7-34R	BCT500HS, Y500CTS	Y35, Y39, Y750, Y46*, PAT750					
YA302TC38	1	300 kcmil	150	3/8"	1"	1.20"	2.00"	.16"	4.45"	Y644HS (1) Y81KFT (3) Y81KFTMBH (3) PAT81KFT-18V (3)	W30VT (4)	W30VT (4) W30RT (4)	U30RT (4) U28ART (4)	White	17	2"		
YA302N	1			1/2"	1-3/4"	1.20"	2.00"	.16"	5.64"		W31VT (4)	W31VT (4) W31RT (4)	U31RT (4) U29ART (4)	Red	18	2-1/16"		
YA312N	1	350 kcmil	185	1/2"	1-3/4"	1.29"	2.00"	.18"	5.68"	Y644HS (1) Y81KFT (4) Y81KFTMBH (4) PAT81KFT-18V (4)	W32VT (4)	W32VT (4) W32RT (4)	U32RT (4) U30ART (4)	Blue	19	2-3/16"		
YA312TC14E2	1			3/8"	1"	1.29"	2.00"	.18"	4.49"		W33VT (4)	W33VT (4) W33RT (4)	U33RT	Gray	326 or 538	2-3/16"		
YA312TC38	1			1/2"	1-3/4"	1.38"	2.12"	.19"	5.85"		W34VT (4)	W34VT (4) W34RT (4)	U34RT (4) U31ART (4)	Brown	20	2-1/2"		
YA322N	1	400 kcmil	—	3/8"	1"	1.38"	2.12"	.19"	4.66"	Y644HS (1) Y81KFT (4) Y81KFTMBH (4) PAT81KFT-18V (4)	—	—	U35RT (4)	Yellow	21	2-11/16"		
YA322TC38	1			1/2"	1-3/4"	1.55"	2.25"	.23"	6.06"		—	—	U36RT (4) U32ART (4)	Green	22	2-3/4"		
YA332N	1	450 kcmil	—	3/8"	1"	1.55"	2.25"	.23"	4.90"	Y644HS (1) Y81KFT (4) Y81KFTMBH (4) PAT81KFT-18V (4)	—	—	U37RT (4)	Orange	23	2-7/8"		
YA342N	1			1/2"	1-3/4"	1.65"	2.63"	.25"	6.49"		—	—	U38RT (4)	Pink	400	2-7/8"		
YA342TC14E2	1			1/2"	1-3/4"	1.74"	2.69"	.27"	6.59"		—	—	U39RT (4) P39RT (4) **	Black	24	2-3/4"		
YA342TC38	1	600 kcmil	300	3/8"	1"	1.74"	2.69"	.26"	5.59"	Y644HS (1) Y81KFT (4) Y81KFTMBH (4) PAT81KFT-18V (4)	—	—	P40RT (4) **	Orange	25	3"		
YA352N	1			1/2"	1-3/4"	1.80"	2.81"	.27"	6.74"		—	—	—	Gold	26	3"		
YA362N	1	650 kcmil	—	1/2"	1-3/4"	1.84"	2.81"	.27"	6.77"	Y644HS (1) Y81KFT (4) Y81KFTMBH (4) PAT81KFT-18V (4)	—	—	P44RT (4) **	White	27	3-1/16"		
YA362TC38	1			3/8"	1"	1.84"	2.81"	.27"	5.76"		—	—	P45RT (6) **	Yellow	29	3-1/4"		
YA372N	1			1/2"	1-3/4"	1.91"	2.88"	.27"	6.87"		—	—	—	Orange	30	3-1/4"		
YA382N	1	700 kcmil	—	3/8"	1"	1.63"	2.88"	.27"	5.87"	Y644HS (1) Y81KFT (4) Y81KFTMBH (4) PAT81KFT-18V (4)	—	—	P46RT (6) **	Green	31	3-1/4"		
YA382TC38	1			3/8"	1"	1.91"	2.88"	.27"	5.87"		—	—	—	Gray	33	3-1/2"		
YA392N	1	750 kcmil	—	1/2"	1-3/4"	1.95"	2.94"	.30"	6.95"	Y644HS (1) Y81KFT (4) Y81KFTMBH (4) PAT81KFT-18V (4)	—	—	—	Brown	34	3-1/2"		
YA392NT38	1			3/8"	1"	1.63"	2.88"	.27"	5.87"		—	—	—	—	—	—	—	—
YA392TC38	1			3/8"	1"	1.91"	2.88"	.27"	5.87"		—	—	—	—	—	—	—	—
YA402N	1	800 kcmil	400	1/2"	1-3/4"	1.95"	2.94"	.30"	6.95"	Y644HS (1) Y81KFT (4) Y81KFTMBH (4) PAT81KFT-18V (4)	—	—	—	—	—	—		
YA412N	1	850 kcmil	—	1/2"	1-3/4"	2.01"	2.94"	.31"	6.96"		—	—	—	—	—	—	—	
YA442N	1	1000 kcmil	500	1/2"	1-3/4"	2.17"	3.00"	.33"	7.14"	Y644HS (1) Y81KFT (4) Y81KFTMBH (4) PAT81KFT-18V (4)	—	—	—	—	—	—		
YA442TC38	1			3/8"	1"	2.19"	3.00"	.33"	6.14"		—	—	—	—	—	—	—	—
YA452N	1	1250 kcmil	—	1/2"	1-3/4"	2.46"	3.19"	.38"	7.44"	Y644HS (1) Y81KFT (4) Y81KFTMBH (4) PAT81KFT-18V (4)	—	—	—	—	—	—		
YA4532N	1	1300 kcmil	—	1/2"	1-3/4"	2.53"	3.19"	.39"	7.48"		—	—	—	—	—	—	—	
YA462N	1	1500 kcmil	—	1/2"	1-3/4"	2.67"	3.19"	.40"	7.55"	Y644HS (1) Y81KFT (4) Y81KFTMBH (4) PAT81KFT-18V (4)	—	—	—	—	—	—		
YA472N	1	1750 kcmil	—	1/2"	1-3/4"	2.90"	3.44"	.42"	7.89"		—	—	—	—	—	—	—	
YA482N	1	2000 kcmil	—	1/2"	1-3/4"	3.10"	3.44"	.46"	7.98"	—	—	—	—	—	—	—		

▲ See tooling section of this catalog for complete tool and die listings.

\* Use PUADP-1 adaptor with U -dies in Y46 HYPRESS™.

\*\* P-RT die sets for use in Y46 HYPRESS™ only, PUADP-1 adaptor not required.

\*\*\* The MM² conductor sizes listed are the recommendations for Class 2 conductor.

Available undrilled. Add suffix U to catalog number (example: YA25U).

◆ For applications greater than 2000 Volts consult cable manufacturer for voltage stress relief instructions.

Note: All dimensions shown are for reference only.

Blue highlighted items are industry standard and most frequently ordered.